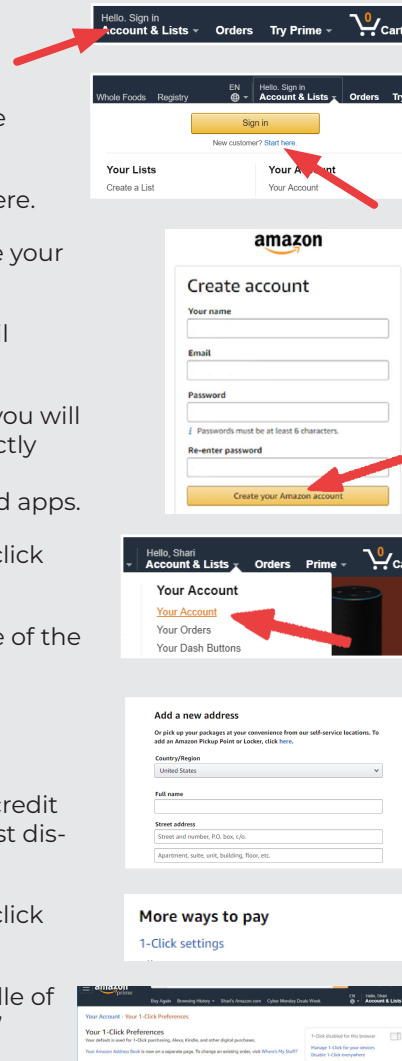


# Setting up your Amazon Account

## Follow these steps:

1. Go to **amazon.com**.
2. Hover on the Account & Lists tab in the upper right corner.
3. Under the Sign in button, click Start here.
4. Complete the form and click on Create your Amazon account.
5. Follow the prompts to verify your email address.
6. Once you have created your account, you will see Hello, (insert your name here) directly above the Account & Lists tab. Next, enter a valid address to download apps.
7. Hover on the Account & Lists tab and click "Your Account."
8. Click "Your Addresses" near the middle of the screen, then "Add Address."
9. Complete the form and click the "Add address" button.
10. Hover on the Account & Lists tab and click "Your Account."
11. Find "More ways to pay" near the middle of the screen, then click "1-Click settings."
12. Click "Disable 1-Click everywhere."



Finally, if you do not wish to add your credit card number to your account, you must disable 1-Click settings.

FIRE STICK EDITION

## CTC StreamTV Quick-Start Guide



1. Welcome to CTC Stream TV! To get started, please call our office at 218-454-1234 to have our team create a CTC Stream TV account for you. You will be required to provide us with an email address. Once we've created your account, you will receive an email from noreply@gocctv.tv. Open the email and follow the instructions to complete your account set up. Please note the link within the email expires within 24 hours.

User Name (email address)

Password

2. Once registered at stream.gocctv.tv, set up your Amazon Firestick. Follow the manufacturer instructions and select your home's wireless network to connect your device to when prompted:

Network Name

Password

3. If using an Amazon Fire device, create a free Amazon account if you don't have one: (instructions in this guide)

Email Address

Password

4. Download the CTC StreamTV app from the app store for your device. Easily find our app by searching "CTC StreamTV".
5. Log in to the CTC StreamTV app for your device using the username (email address) and password you created on stream.gocctv.tv in step 1.

## CTC StreamTV App: Sign In/Sign Out

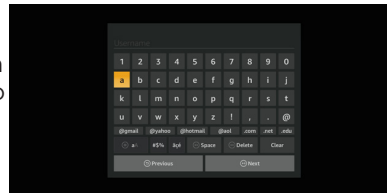
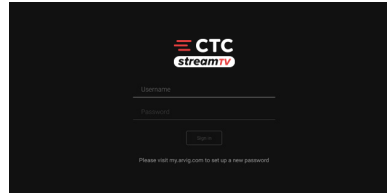
When accessing the app the first time, or to sign in after signing out, please enter the username and password you created on [stream.goctc.tv](http://stream.goctc.tv).

The username is the full email address you signed up with. If you've signed in previously, the email address may be auto-filled.

1. On the sign-in screen, press Select to access the on-screen keyboard.
2. Press left, right, up and down on the Navigation button to highlight letters, numbers and symbols on the on-screen keyboard and press the Select button to enter the character.

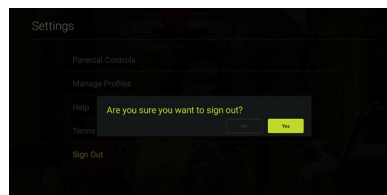
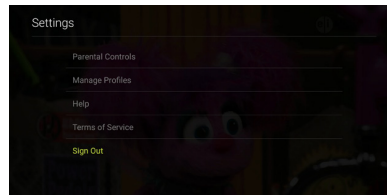
*To access capital letters and symbols, select those keys on the keyboard. Some of the popular keys have remote control shortcuts—see the image on the keys.*

3. When done, press left, right, up and down on the Navigation button to highlight the Next key and press Select.
4. Repeat steps 2 and 3 to enter your password.



## To sign out of the CTC StreamTV App:

1. On live TV, press the Menu button to access the TV menus.
2. Press left or right on the remote's Navigation button to highlight Profile and press Select.
3. Press up on the Navigation button to highlight the Settings menu icon (cog wheel) in the upper right corner of the screen and press Select.
4. Press down on the Navigation button to highlight Sign Out and press Select.
5. A popup window will appear asking, "Are you sure you want to sign out?" Press Select to choose Yes



## Pin the CTC StreamTV app

To keep the CTC StreamTV app front and center, pin it to the front of your app list.

*Steps vary per device and model. We suggest you Google or search the manufacturer's information for the most current, detailed instructions.*

## Fire TV Stick 4K Remote Control



*The buttons on this remote are universal in function, however, the options available within the CTC StreamTV app may be different than in other apps. Your remote may vary.*